



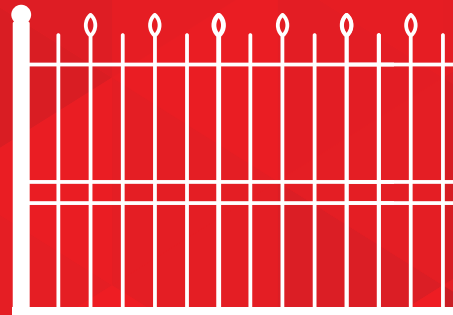
**ACCESS CONTROL  
TECHNOLOGIES**

BY JANUS INTERNATIONAL

# **PREVENT UNAUTHORIZED ACCESS TO YOUR PROPERTY**

with State-of-the-Art Security Gates

**CANTILEVER | PEDESTRIAN-GATE | SWING  
V-TRACK | VERTICAL & PIVOT-LIFT | FENCE PANELS**



# TOTAL SECURITY. TOTAL CONVENIENCE.

When it comes to preventing theft and securing your self-storage facility, apartment/HOA community, warehouse logistic operation or industrial building, you need more than just products. You need the expertise of a trusted partner who understands what you're up against.

For more than two decades, Access Control Technologies (ACT) security industry experts have designed, installed and maintained cutting-edge security solutions for facilities just like yours. From smart access control to surveillance cameras and gates, we offer a comprehensive approach to help protect your property, employees and tenants while improving your experience.



# FORTIFY YOUR FIRST LINE OF DEFENSE

ACT offers premium gate manufacturing, service and repair with a variety of gate options, large inventory, site review and design services. Here's a look at the various gate styles that ACT provides:

## Security Gate Options:

- Residential Community Entrance & Perimeter Gates
- Commercial Security Gates
- Industrial/Warehouse Security Gates
- Ornamental Security Gates
- Storage Center Security Gates
- Automatic Gate Controllers & Openers

## Services Include:

- Site Review and Project Analysis
- Ornamental Design Services
- Gate Manufacturing
- Electric Gate Installation
- Routine Maintenance and Service





## CANTILEVER SLIDE GATES

- Slides open from one end of the entrance to the other
- Durable and easy to maintain
- Cost effective, saving you money up front
- Fast and reliable turnaround



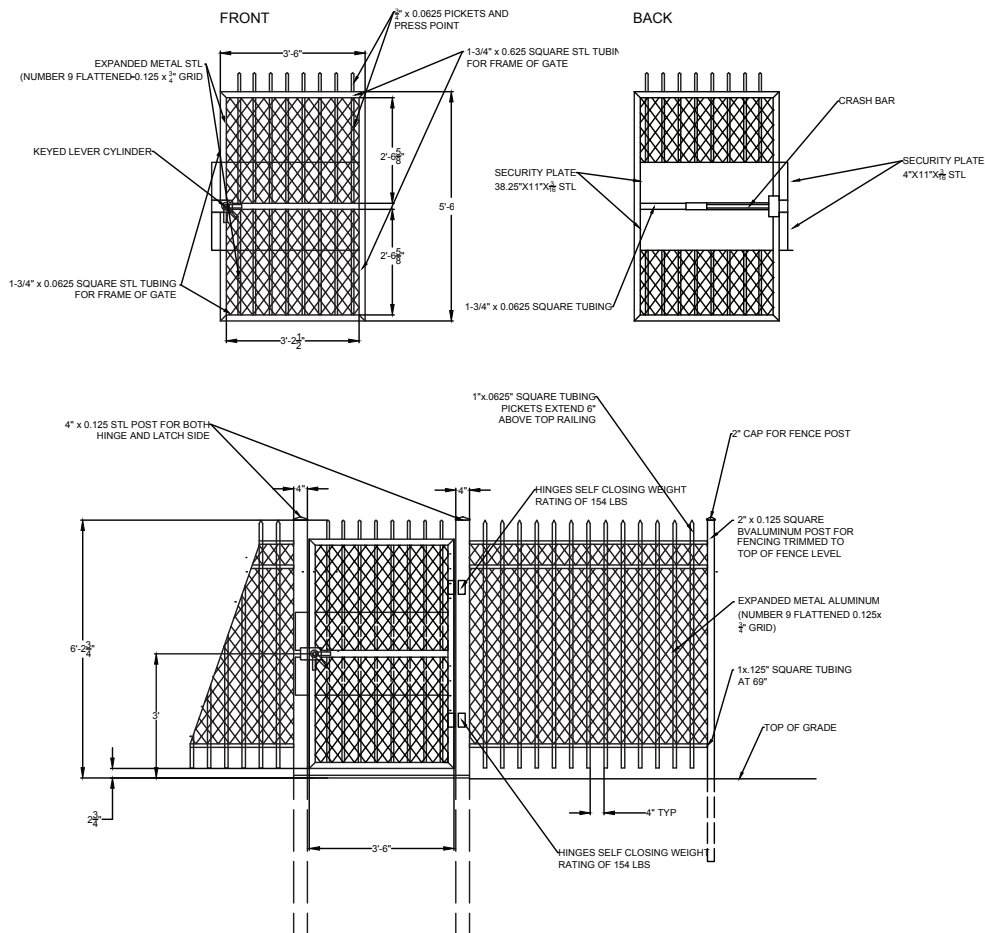




## PEDESTRIAN GATES

- Includes a standard, keyed lever on the outside and a crash/panic bar on the inside
- Comes with a temporary header removed in the field after installation, ensuring everything is kept in place until the final destination
- Plenty in stock in Salisbury, NC, with plans to expand our stock locations to Cartersville, GA, Houston, TX, Las Vegas, NV and Anaheim, CA, creating lower shipping costs





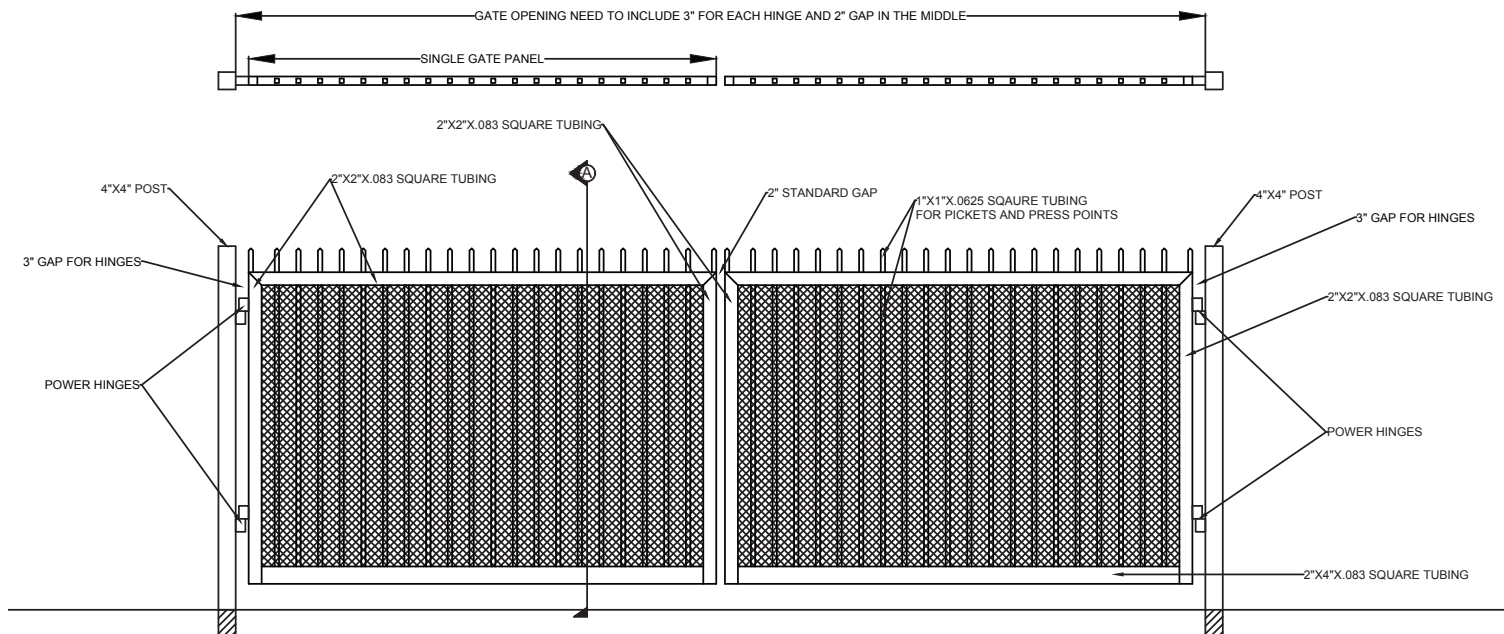
The **ACT Pedestrian Gate** is made from powder-coated steel for years of durable protection against rust and corrosion. It incorporates self-closing hinges for ease of use and offers added security with expanded metal welded directly to the pickets to help avoid unwanted entry from the outside.



## SWING GATES

- Ideal for any climate
- Durable and easy to maintain
- Cost-effective, saving you money upfront
- Perfect for when space is extremely limited





**ACT Swing Gates** are built to perform in even the toughest environments. Crafted from powder-coated steel, they provide long-lasting protection against rust and corrosion, making them ideal for any climate. These space-saving gates swing open and closed on a single post, making them a smart solution when space is extremely limited. Known for being durable, easy to maintain and cost-effective, ACT swing gates offer reliable security without breaking the budget—saving you money upfront while delivering performance that lasts.

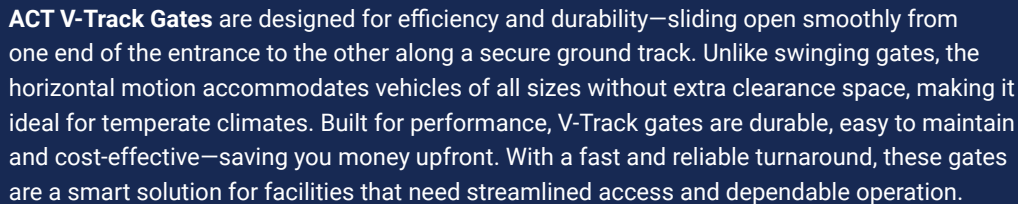


## V-TRACK GATES

- Slides open from one end of the entrance to the other
- Durable and easy to maintain
- Cost effective, saving you money up front
- Fast and reliable turnaround



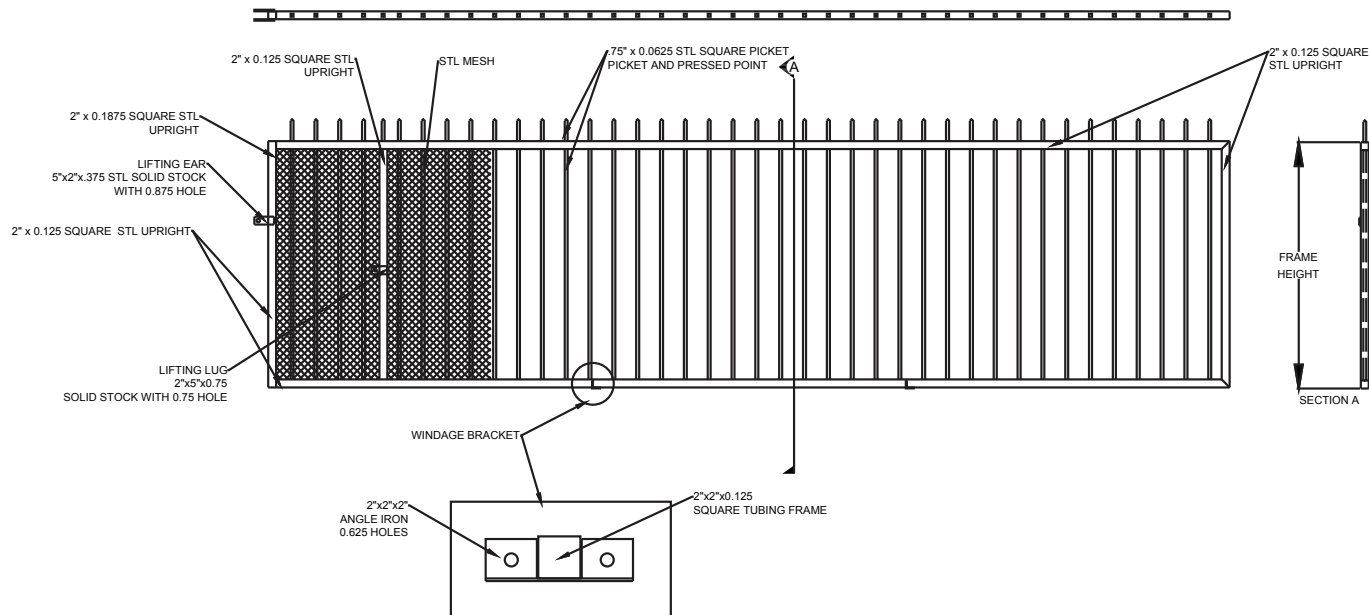




## VERTICAL LIFT/ VERTICAL PIVOT GATES

- Smallest footprint and quickest opening gate option
- Greatest longevity of any gate style
- Ideal for any climate, from snowy to warm weather
- Durability saves money in the long run
- Can be installed quickly





The **Vertical Lift Gate** is a popular style in the self-storage industry, mainly because it has the smallest footprint, taking up roughly a 7'x4' area on one side of the entrance. This gate style pivots up on its heel and out of the way, standing up over the operating unit itself. It is the fastest-opening gate style, meaning less waiting to enter a facility. Also, any size truck can be driven through the gate opening without worrying about the gate impeding the vehicle.

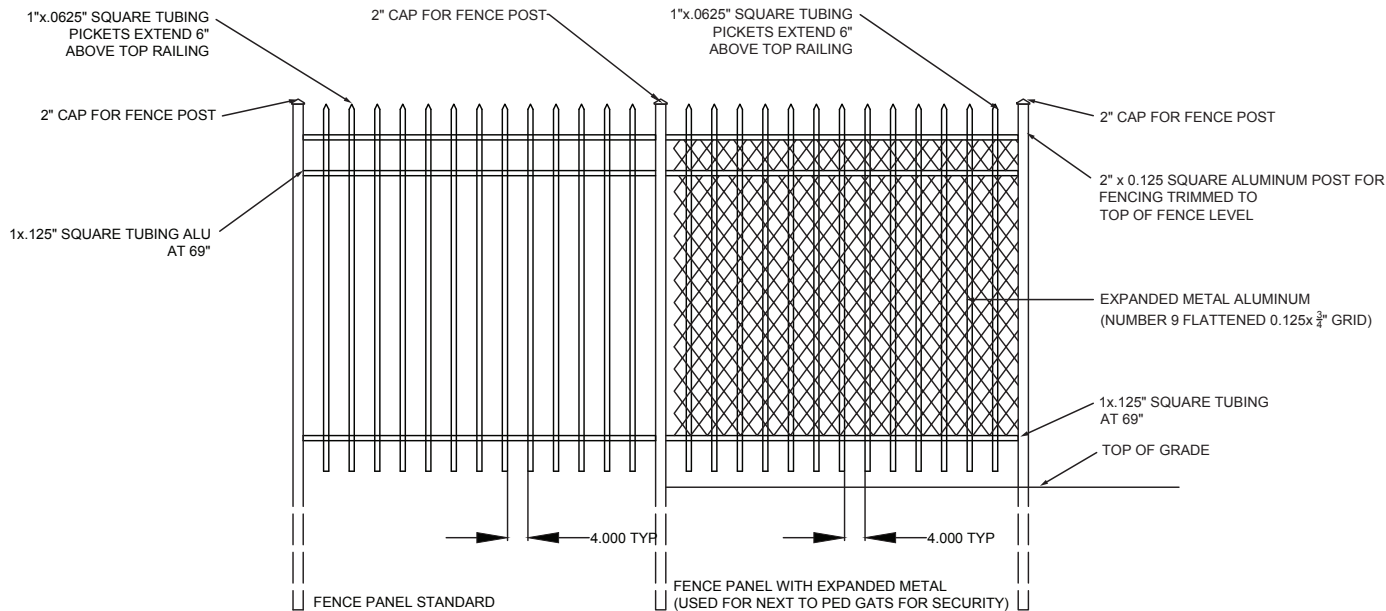
Weather is not a deciding factor with the vertical lift or pivot gate since there is no track for the gate to slide along. This style of gate is extremely durable and long-lasting and although it may cost a bit more, its extended life will save money down the road.



## FENCE PANELS

- Panels are 6' wide x 6' tall
- Length can easily be trimmed down to fit smaller gaps
- Plenty in stock and can be quickly shipped upon request





**ACT Fence Panels** are constructed from solid welded aluminum—no screws, no rivets—delivering a sleek, tamper-resistant solution built to last. Each panel measures 6 feet wide by 6 feet tall, and lengths can be easily trimmed on-site to fit smaller gaps or custom configurations. We keep plenty in stock and can quickly ship panels upon request, so your project stays on schedule. For enhanced protection, optional aluminum expanded metal can be directly welded to the pickets, making it ideal for high-security areas near pedestrian or vehicular gates.

# EXPERIENCE. EXPERTISE. EXCELLENCE.

Scott Underbrink founded ACT in 2004 and built it to become one of the largest national integration companies in the self-storage industry. Since 2021, ACT has operated as a division within Janus International Group to provide you with solutions that work for your specific environment, including full access control installation and maintenance services.

Our experienced team guides you through every step of the process, from identifying vulnerabilities to implementing the right security measures.

**Ready to transform your facility's security?  
We'll show you how.**



## OUR SERVICES





# ACCESS CONTROL TECHNOLOGY



Our Access Control Services offer the latest in innovation and design and are created to help you improve your operational efficiencies and extend your capabilities all while securing and protecting valuable assets, resources and people.

Whether you need to upgrade an outdated access control system, add to an existing one, or commission something brand-new based on plans or an existing structure, we have a team of experts that will take your project from concept to completion.

By maintaining partnerships with world-class, cloud-based and integrated access control solution providers such as Nokē Smart Entry, OpenTech Alliance, PTI Security Systems, Invictus, ButterflyMX, Stratis IoT, ProDataKey and Brivo, we can deliver custom solutions to meet your exact needs while providing an unmatched level of customer service and experience.





## SURVEILLANCE AND ALARM

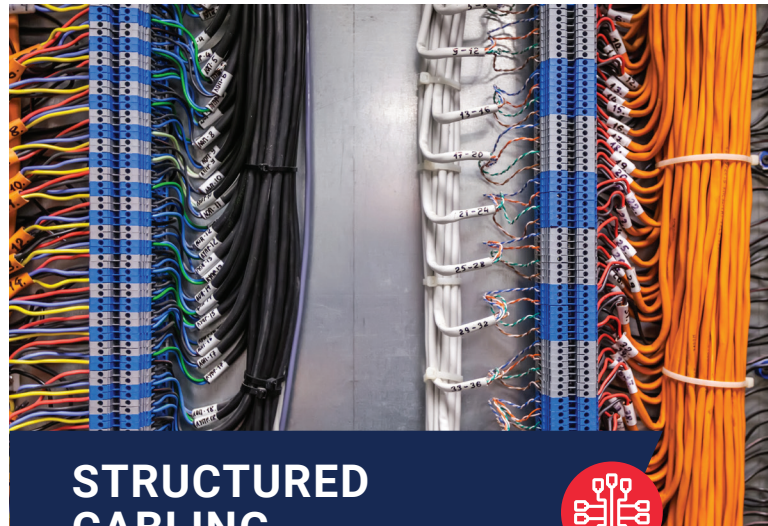


Our customized Surveillance and Alarm services include a variety of sizable systems that are designed to deter theft and vandalism from occurring at your business or residential community. With an experienced team of project managers, electricians and trained installation technicians, ACT ensures quality, safety and dependability when completing your security surveillance camera and alarm project.

By maintaining a purchasing reach covering the best-in-class manufacturers, we can deliver your security camera surveillance and alarm project with quality, service and competitive pricing.

Our Structured Cabling services are designed to optimize your business communication, data transfer and video surveillance operations with an effective network and cable infrastructure system.

Each structured cabling network is skillfully designed to provide your business with uniformity, flexibility and scalability as well as easy and low-cost changes and investment protection for your business assets.



## STRUCTURED CABLING



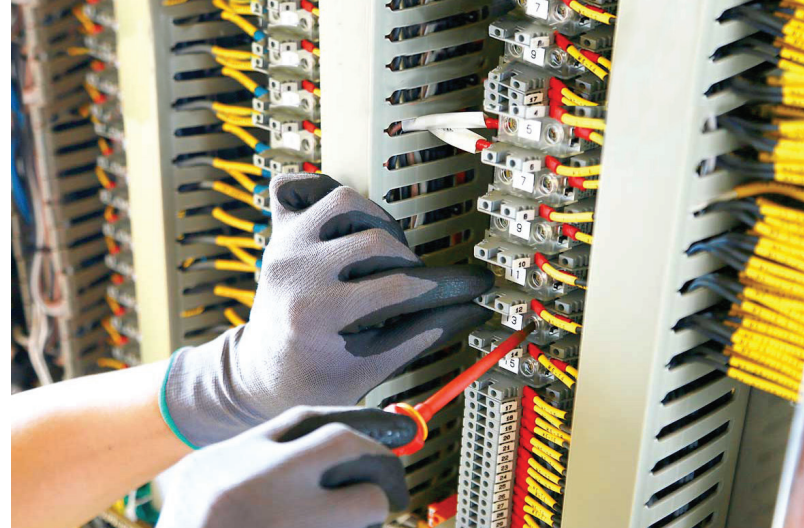




## LOW VOLTAGE SYSTEM DESIGN



Our Low Voltage System Design services optimize uptime and scale your communication, data, audio/video and video surveillance operations. Whether it's a revamp of an existing structured cabling system, a simple network cabling installation, or a significant project that includes a full gamut of Video Security and Alarm, Access Control and Audio-Visual Technologies, our team of experts can design a reliable low-voltage system to meet your application's exact needs.







## SERVICE AND MAINTENANCE



Our customized Service and Maintenance packages are designed to keep your access control and security systems running at peak performance while protecting you from typical unexpected expenses. Our Service Level Agreement (SLA) is the most cost-effective way to extend the life of your installed systems while significantly reducing business disruptions and downtime.

With a purchasing reach covering all of the best-in-class manufacturers such as Nokē Smart Entry, AutoGate, SunPower, Viking, Lift Master, Max, DoorKing and HySecurity, we can deliver preventative service and maintenance with the highest quality of care, quickest turnarounds and competitive pricing you're looking for. Don't see your equipment brand listed? Don't worry: we can service and maintain nearly all equipment brands commonly used in access control, gate operators, intercoms and more.

### Benefits Include:

- Extend the life of your installed systems
- Leveraging existing warranties to avoid out-of-pocket equipment and part replacements
- Avoid costly break/fix emergencies
- Prevent wearing out your equipment prematurely
- Control annual operational costs
- Save money with reduced service rates

### Service Level Agreements Include:

- **VIP Customer Status:** Your site information moves into our VIP database
- **Save Money:** Receive a customer preferred service rate vs. the regular hourly rate
- **No Minimum Billings**
- **Preferred Scheduling:** Priority scheduling and response time during normal business hours
- **Bi-Annual/Quarterly Visits**
- **Peace of Mind Warranty Coverage**

***Review additional Service Level Agreement details at [AccessControl.tech](https://AccessControl.tech).***

## This image shows a blank sheet of white paper with horizontal ruling lines. The lines are evenly spaced and extend across the width of the page. There are no margins, text, or other markings on the paper.





▲ SCAN HERE



**ACCESS CONTROL  
TECHNOLOGIES**

BY JANUS INTERNATIONAL

705 Hedrick Street  
Salisbury, NC 28144  
866-495-4465

2025/07